

# Spectral variations within solar flare ribbons

A.G.M. Pietrow<sup>1</sup> , M.K. Druett<sup>2</sup> , and V. Singh<sup>3</sup> 

<sup>1</sup>Leibniz-Institut für Astrophysik Potsdam (AIP), An der Sternwarte 16, 14482 Potsdam, Germany

<sup>2</sup>Centre for mathematical Plasma Astrophysics, Department of Mathematics, KU Leuven, Celestijnenlaan 200B, B-3001 Leuven, Belgium

<sup>3</sup>Department of Mathematics, Physics and Electrical Engineering, Northumbria University, Newcastle upon Tyne, NE1 8ST, UK  
e-mail: apietrow@aip.de

Draft: compiled on February 19, 2024

## ABSTRACT

**Context.** Solar flare ribbons are intense brightenings of principally chromospheric material that are responsible for a large fraction of the chromospheric emission in solar and stellar flares. We present an on-disc observation of flare ribbon substructures in an X9.3-class flare observed by the Swedish 1-m Solar Telescope.

**Aims.** We identify categories of ribbon substructures seen in the Ca II 8542 Å, H $\alpha$ , and Ca II K lines, focusing on their spatial locations and their (spectro-)polarimetric properties.

**Methods.** Color Collapsed Plotting (COCOPLLOT) software is used to assist in identifying areas of interest.

**Results.** We present five categories of spectral profiles within the general body of the flare ribbon: (1) Extremely broadened spectral line profiles, where the standard Fabry-Perot interferometer wavelength windows ( $\approx 70 \text{ km s}^{-1}$ ) are insufficiently wide to allow for a complete analysis of the dynamics and atmospheric conditions. The mechanisms causing this degree of this broadening are not yet clearly understood. (2) Long-lived, dense kernels that manifest as more saturated chromospheric line profiles with lower signal in both Stokes parameters. They are interpreted as footpoints of bunched magnetic field loops, whose chromospheric lines form at greater heights than the nearby areas. (3) Doppler-shifted leading edges of the flare ribbon in regions that transiently display lower Stokes signals due to the emission dominating at greater heights in the atmosphere. (4) Condensed coronal rain overlapping the flare ribbons in the line of sight, producing exceptionally high Doppler shifts near the footpoints. (5) Compact blue-shifted areas close to areas with coronal rain down-flows, which are interpreted as material that is thrown up as a result of the down-flowing material impacting the chromosphere. Additionally, a ribbon formation height of about 700 km with respect to penumbral features is estimated using correlating structures on the ribbon and the underlying photosphere.

**Conclusions.** When selecting areas of flare ribbon for more general analysis, especially small regions consisting of a few pixels or low-resolution averages, it is important to be aware of the variety of substructures present within a flare ribbon, and of the spatial context that can produce these differences. General behaviors across the ribbon should not be inferred from regions that show localized differences.

**Key words.** Sun: chromosphere - Sun: flares - Sun: atmosphere - Line: formation - Line: profiles

## 1. Introduction

Solar flare ribbons are regions showing strongly enhanced emission in chromospheric spectral lines during flares. They are of particular interest to researchers studying flares and solar activity as they account for a large fraction of the optical emission, and provide a wealth of spectral line data that can be used to diagnose energy transport, conversion, and release. Recently there has been increased interest in using information from spatially resolved solar flare ribbon observations to understand the physical origins of spectral behavior reported from stellar flares (Kowalski et al. 2017b, 2019; Otsu et al. 2022; Pietrow et al. 2024; Otsu & Asai 2024). However, there is an energy gap of several magnitudes between solar and stellar flares due to the way that they are detected and measured on stars as shown in e.g. Maehara et al. (2015), Pietras et al. (2022), and Simões et al. (2024).

Since the 1950s researchers have reported the observations of areas within ribbons that have spectral line profiles exhibiting features such as strong asymmetries (Švestka et al. 1961, 1962; Ichimoto & Kurokawa 1984; Wuelser & Marti 1989), or particu-

larly different profiles of intensity as a function of time (Dodson et al. 1956; Harvey 1971).

These spectral line behaviors have generally been interpreted as being produced by the lower atmospheric effects (in terms of dynamics, energy deposition, and evolution of atmospheric conditions) resulting from energy released in coronal magnetic reconnection (Sweet 1958a,b; Parker 1963; Petschek 1964) and transported down to the solar surface along magnetic field lines (Sturrock 1966, 1968; Brown 1971; Syrovatskii & Shmeleva 1972; Emslie 1978; Shibata 1998; Fletcher et al. 2011; Zharkova et al. 2011).

To date, ribbon formation has been modeled using detailed, field-line-aligned, 1-dimensional hydrodynamic models with detailed radiative transfer prescriptions and externally prescribed field strength parameterizations, such as RADYN (Allred et al. 2005, 2015) and HYDRO2GEN (Druett et al. 2017; Druett & Zharkova 2018, 2019). More recent incarnations of RADYN models have also attempted to bridge the gap to multiple dimensions via stacked 1D modeling (Kerr et al. 2020). Multi-dimensional magnetohydrodynamic studies of ribbon formation (Druett et al. 2023b,a) have recently been produced using the

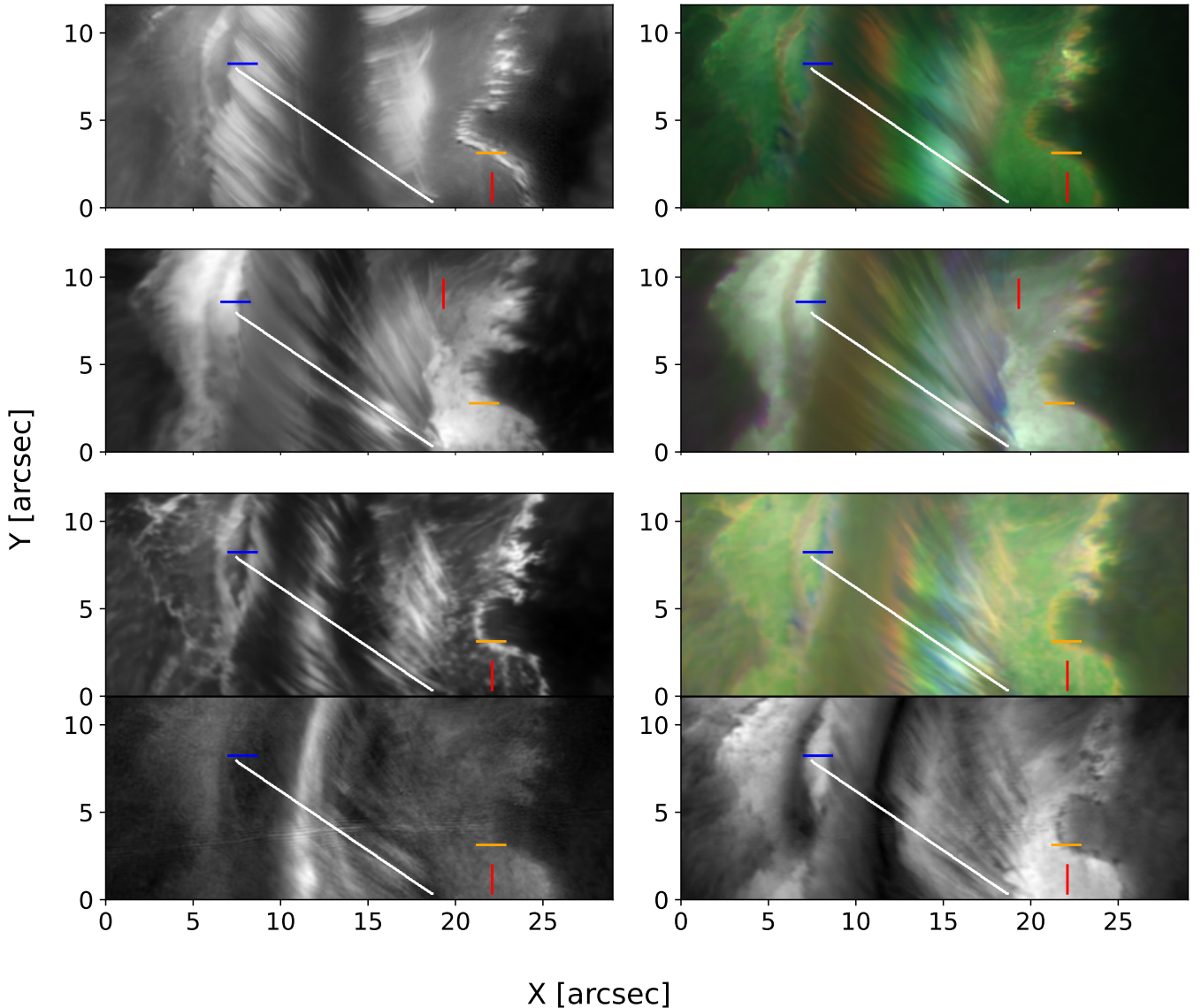


Fig. 1: The flare arcade and ribbon plotted with respect to  $(x, y) = 515, -268$  between 12:02:52 and 12:02:58 UT in the red wings (left) of the  $\text{Ca II K}$ ,  $\text{H}\alpha$ , and  $\text{Ca II } 8542 \text{ \AA}$  lines, as well as in a COCOPLOT (right). Colored cross-sections mark representative examples of ribbon freckles (red), the leading edge of the flare ribbon (orange), a blue-shifted up-flow region (blue), and the flare arcade (white). **Top row:** The red wing of  $\text{Ca II K}$  along with a COCOPLOT. **Second row:** The same, but for  $\text{H}\alpha$ . **Third row:** Same but for  $\text{Ca II } 8542 \text{ \AA}$ . **Bottom row:** Maps of the  $\text{Ca II } 8542 \text{ \AA}$  line of the total linear (left) and circular (right) polarization.

MPI-AMRVAC code (Keppens et al. 2023), but without inclusion of the detailed lower atmospheric structure and radiative transfer modeling that is important for accurate synthesis of energy transport and dynamics in the flaring chromosphere.

Such models provide new insights into the details and remaining questions about flare ribbons, such as their formation height, the velocities and durations of flows within them, and explanations of the exceptionally broad line profiles present within the ribbon (Druett et al. 2021; Kowalski et al. 2022). This has been achieved in parallel with interpretations and data from space telescopes such as Hinode (Kosugi et al. 2007), the Solar Dynamics Observatory (SDO, Pesnell et al. 2012; Lemen et al. 2012; Scherrer et al. 2012), and the Interface Region Imaging Spectrograph (IRIS, De Pontieu et al. 2014) and ground-

based telescopes such as the Swedish 1-m Solar Telescope (SST, Scharmer et al. 2003) and GREGOR (Schmidt et al. 2012; Kleint et al. 2020).

Flare strengths are typically expressed using the Baker (1970) scale, which is based on the peak soft X-ray flux observed in the 1-8 $\text{\AA}$  channel of the Geostationary Operational Environmental satellite (GOES) (Schmit et al. 2005, 2017, 2019; Machol et al. 2020). We refer the reader to p29 of Pietrow (2022) for a complete overview of the system.

Kuridze et al. (2020) used SST observations of a flare over the solar limb to determine the height of ribbon emission in the wing of the  $\text{H}\beta$  line during an X-class solar flare, measuring 300-500 km, in good agreement with previous Hard X-ray observa-

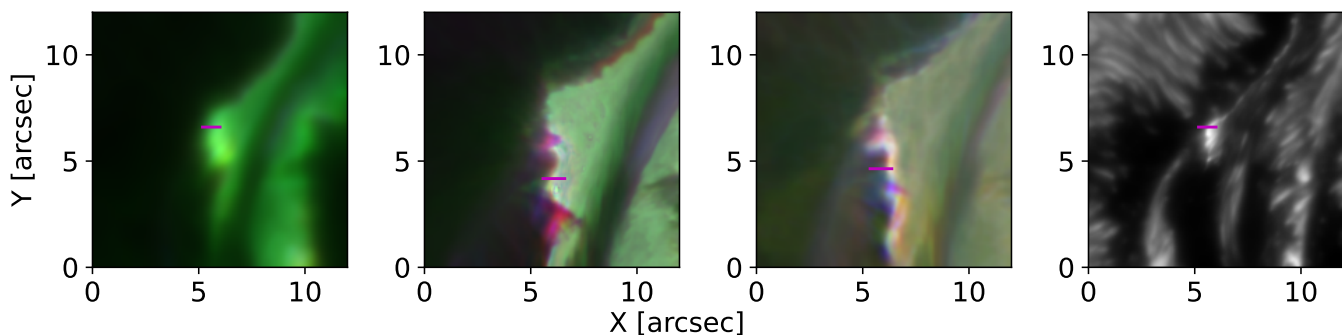


Fig. 2: COCOPLOT and 4000 Å continuum images of the flare ribbon plotted with respect to  $(x,y)=514,-266$  between 11:57:19 and 11:57:25 UT of the Ca II K, H $\alpha$ , and Ca II 8542 Å lines. Magenta slits mark the region with the strongest broadening on each image.

tions of limb flares (Martínez Oliveros et al. 2012; Krucker et al. 2015).

It has long been known that small flare kernels within the ribbon have much stronger red asymmetries in their chromospheric spectral lines, such as hydrogen H $\alpha$  (Harvey 1971). This has been re-emphasized by observations with modern instrumentation (Deng et al. 2013; Osborne & Fletcher 2022), including highlighting behaviors such as the clustering of the profiles with larger red-wing asymmetries in widths of about 1000 km at their leading edges during the impulsive phase (Asai et al. 2012), and the kilogauss strength and visibility of chromospheric magnetic structures within the flare ribbon (Vissers et al. 2021) between which signs of magnetic reconnection can switch rather abruptly (Asai et al. 2012). Druett et al. (2017) showed that small (sub-arcsecond) individual flare kernels, even in a C1.5 class flare, can exhibit strong Doppler red-shifted emission in H $\alpha$  that can be interpreted as downward compressive flows in the chromosphere.

Zhu et al. (2019) and Huang et al. (2019) studied the Mg II h & k triplet lines, which show profiles in flares that are particularly difficult to reconcile with self-consistent flare models, with Kerr et al. (2019a,b) providing additional insight into modeling approaches that can help to overcome these. Zhu et al. (2019) suggest that effects such as the high free electron density and the transient stretching of the transition region (TR) over a greater distance, due to dramatic heating of the chromosphere, can help but not fully explain such emissions. They inferred from their models that the formation region of the spectral line core of Mg II h & k can be compressed and subsequently pushed downwards by around 500 km. A similar conclusion is reached by Yadav et al. (2021) for the Ca II K line. Kerr et al. (2019c) investigated the Si IV line emission with IRIS observations and RADYN modeling, which support the picture that Si IV is formed under optically thick conditions in stronger flares from plasmas with characteristic temperatures in the range 30–60 kK. Sub-second cadence observations of flare ribbons made with IRIS in Mg II h & k, Si IV, C II line spectra are reported in Druett et al. (2024). Interpretation of these observations through MHD models suggests that the combination of TR stretching and the downward motion of the formation regions can contribute to differing TR line Doppler shifts in flare ribbons. Similarly, simulations have shown that the contribution function of photospheric lines can expand well into the chromosphere where peak beam energy deposition occurs (Monson et al. 2021).

The leading edges of flare ribbons have also been the subject of significant recent study. Kerr et al. (2021) showed that dimming of the leading edges of expanding flare ribbons in He I 10830 Å can be explained by non-thermal collisional ionization.

Polito et al. (2023) found that the leading edges of four flare ribbons showed significantly reduced signs of evaporation and, via interpretation using RADYN modeling, evidence of reduced electron beam injection effects. Druett et al. (2023b,a) demonstrated that multi-dimensional effects can also impact the leading edge via compression and heat diffusion from neighboring field lines, which should also result in a leading edge with lower electron fluxes and evaporation signatures. Singh et al. (2024) used sub-second cadence optical observations in the H $\alpha$  line to analyze the downward motion of ribbon substructures, which brighten and then move down toward the main body of the flare ribbon over distances on the order of thousands of kilometers at velocities on the order of tens of kilometers per second.

In this paper we combine conclusions from previous investigations with a new analysis of a X9.3-class flare, to present a summary view of solar flare ribbon structures. This interpretation will allow us to (re)interpret previous and newly analyzed data.

## 2. Data and methods

The active region designated NOAA 12673 ( $(x, y) = (537'', -222'')$ ,  $\mu = 0.79$ ) was observed on the 6th of September 2017, between 11:55 and 12:52 UT with the SST, using the CRISP Imaging SpectroPolarimeter (CRISP, Scharmer et al. 2008) and the CHROMOSpheric Imaging Spectrometer (CHROMIS, Scharmer 2017) instruments.

With CRISP the H $\alpha$  6562.8 Å and Ca II 8542 Å lines were observed sequentially with a total cadence of 15 s. For H $\alpha$  the observing sequence consisted of 13 wavelength positions in at  $\pm 1.50, \pm 1.0, \pm 0.80, \pm 0.60, \pm 0.30, \pm 0.15, \text{ and } 0.00$  Å relative to the line center. The Ca II 8542 Å line was sampled at 11 wavelength positions taken in full Stokes polarimetry mode at  $\pm 0.7, \pm 0.5, \pm 0.3, \pm 0.2, \pm 0.1, \text{ and } 0.0$  Å relative to the line center. The CRISP plate scale is  $0.058'' \text{ pixel}^{-1}$ , and its spectral resolution is around  $\mathcal{R} \approx 130\,000$ .

With CHROMIS only the Ca II K line, together with the 4000 Å continuum was observed, with a cadence of 6.5 s. The scan consisted of 19 wavelength positions in the Ca II K line at  $\pm 1.00, \pm 0.85, \pm 0.65, \pm 0.55, \pm 0.45, \pm 0.35, \pm 0.25, \pm 0.15, \pm 0.07, \text{ and } 0.00$  Å relative to the line center, plus a single continuum point at 4000 Å. The CHROMIS plate scale is  $0.0375'' \text{ pixel}^{-1}$ , and its resolution is around  $\mathcal{R} \approx 120\,000$ .

In addition to the narrow-band images, wide-band images were obtained co-temporally with each CRISP and CHROMIS narrow-band exposure for alignment purposes.

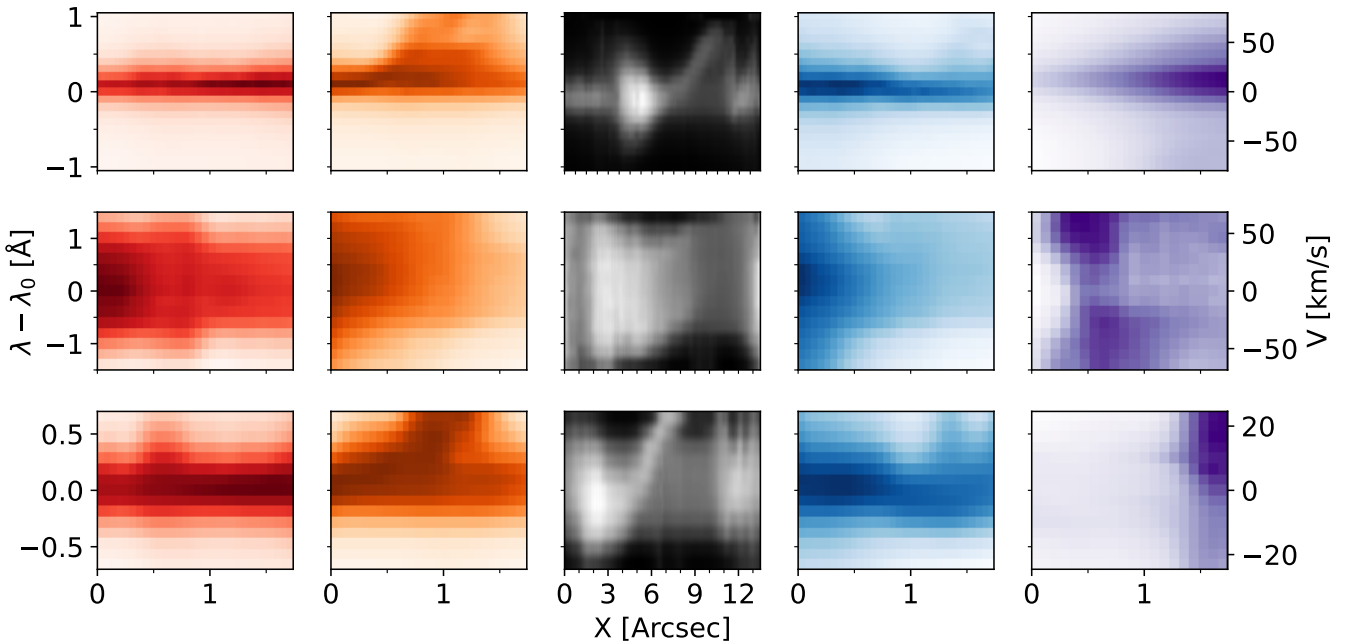


Fig. 3: Spectral profiles of the cross-section indicated in Figs. 1 and 2. Each vertical set of three panels corresponds to the Ca II K, H $\alpha$ , and Ca II 8542 Å respectively, with each column corresponding to the cross-section of the same color shown in Fig. 1 or Fig. 2. **Left column/red:** A ribbon freckle at  $x \approx 0.65$  arcsec. **Second column/orange:** The leading edge of the flare ribbon at  $x \approx 0.3$  arcsec. **Third column/grey:** A cut tracing the trajectory of a coronal loop with condensed rain flowing down towards the flare ribbon. **Fourth column/blue:** Profiles from the part of the ribbon near the base of a coronal loop down-flow crossing a region showing blue-shifted profiles. **Fourth column/magenta:** Broad profiles found in the early stages of the flare.

The data were processed using the standard SSTRED pipeline (de la Cruz Rodríguez et al. 2015; Löfdahl et al. 2021) with multi-object multi-frame blind deconvolution (MOMFBD, Löfdahl 2002; van Noort et al. 2005). However, under poor seeing conditions this process fails (e.g. see Fig. 5.4 of Pietrow 2022), and for this reason so-called mixed reductions have been produced according to the methods presented in Pietrow et al. (2024).

The H $\alpha$  and Ca II 8542 Å data were first described in Quinn et al. (2019), while the Ca II K data were first shown in (Pietrow et al. 2022) and were reprocessed for Pietrow et al. (2024). A detailed review of the data, and the evolution of the AR that gave rise to the flare can be found in section 4.2 of Pietrow et al. (2024).

Overviews of the spectral information are given using Color Collapsed plots (COCOPLOTS, Druett et al. 2022). This method summarizes spectral information by making use of the RGB color space. In our case we have convolved the images with three equally spaced Gaussian wavelength filters, creating three filtergrams centered on the line center and the red and blue line wings. When combined into an RGB image, the relative pixel value of each of these three filtergrams is expressed as a color. For example, a purple pixel represents a typical absorption profile whose wings are above the line center. A strongly red-shifted profile will appear red, a non-shifted emission profile will appear green, and a heavily broadened profile will appear white since all three filtergrams give a similar value. This makes COCOPLOTS a powerful quick-look tool for identifying and even selecting specific profiles.

Polarization information is summarized using the total circular (TCP =  $\int |V_\lambda|/I_\lambda d\lambda$ ), and total linear (TLP =

$\int \sqrt{Q_\lambda^2 + U_\lambda^2}/I_\lambda d\lambda$ ) polarizations respectively. Where I, Q, U, and V, represent the respective Stokes (1851) parameters.

Due to the variable seeing conditions in which this data set was taken, only a limited number of scans exist where all three lines and the continuum point are sampled under good enough conditions to resolve small scale structures co-temporally. In this work, we focus on two such frames that were taken at 11:57 and 12:02 UT. Four regions of interest were selected in the latter time frame's field of view (FOV), and one in the former. Multiple examples were found of each spectral category, but we focus on giving a representative example of each, showing their spectral and polarimetric behavior to introduce key features of each structure. A future study will focus on the statistical and spectropolarimetric properties of these structure types.

### 3. Results

In Fig. 1 an approximately 30 by 12 arcsec FOV centered on the flare ribbons is shown in Ca II K, H $\alpha$ , and Ca II 8542 Å (top three rows) with total circular and linear polarization in the Ca II 8542 Å line shown in the bottom row. Each FOV is given with coordinates relative to  $(x,y) = 515,-268$ . A red wing intensity image and a COCOPLOT are shown to distinguish between the different ribbon sub-structures, and the total polarization maps indicate the magnetic field structure. The spectral lines in this figure are sorted by typical relative solar formation heights (although actual formation heights can vary greatly within the 3D structures of the chromosphere). The Ca II 8542 Å line core forms in the lower chromosphere, below H $\alpha$ . The Ca II K line core forms above these two, in the middle of the chromospheric



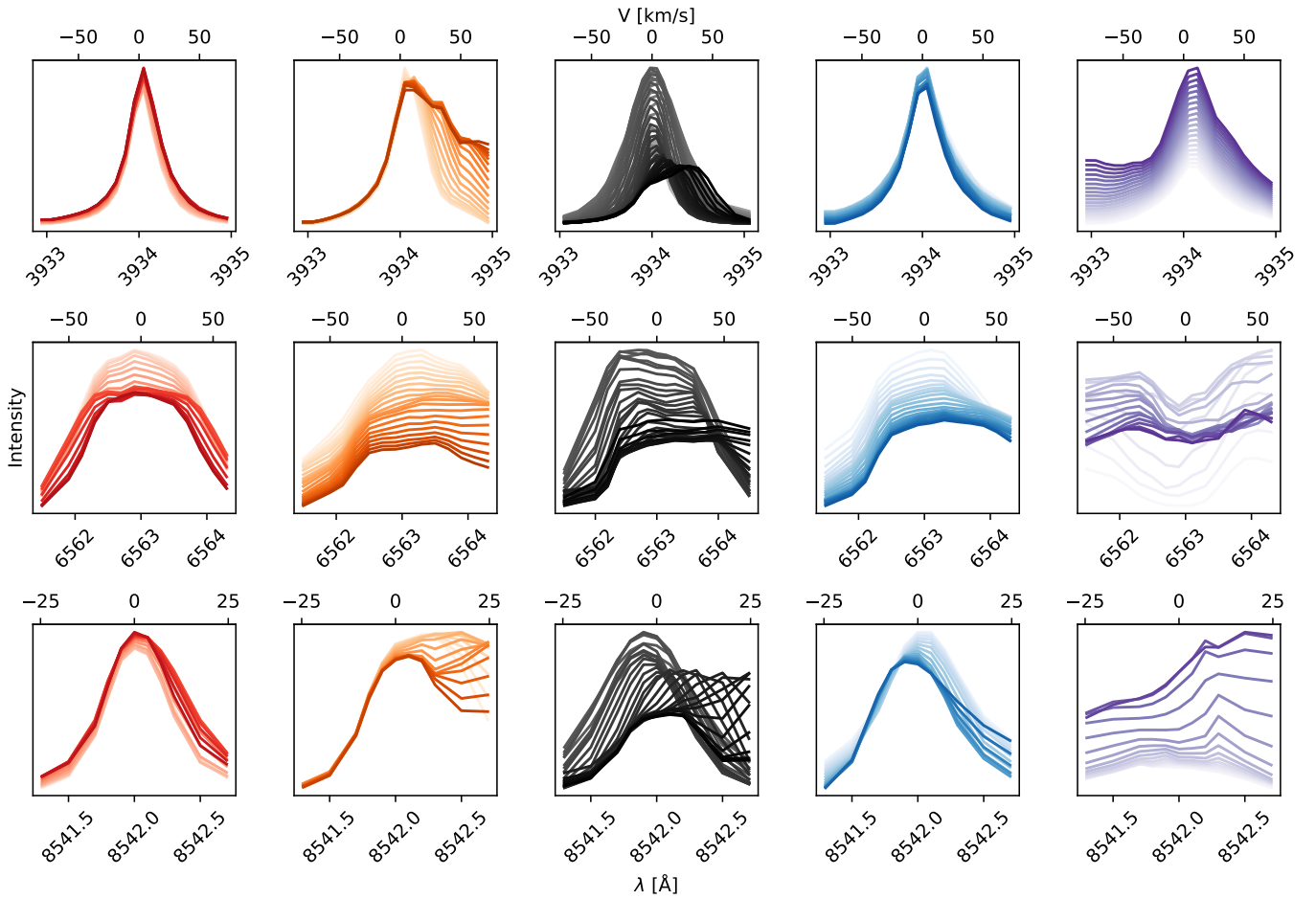


Fig. 4: Spectra of each feature described in Fig. 3 compared to their surroundings. The top row shows the Ca II K spectral lines, the middle row shows H $\alpha$ , and the bottom row shows Ca II 8542 Å. The left column shows in red these spectra for the red slit from Fig. 1 placed over a ribbon freckle. The second column shows in orange the results for the leading edge of a flare ribbon. The third column shows in gray the spectra for the slit tracing the trajectory of a flare loop, which shows coronal down-flows over a ribbon area in the line of sight. The fourth column shows spectra in blue for profiles at the base of the coronal rain loops. The fifth column shows broad profiles. The darkest line in each of the panels is the spectral line shape from the pixel in the middle of each structure selected for examination, and the lighter lines represent the spectra as one moves out from this feature along the slit indicated in Fig. 3.

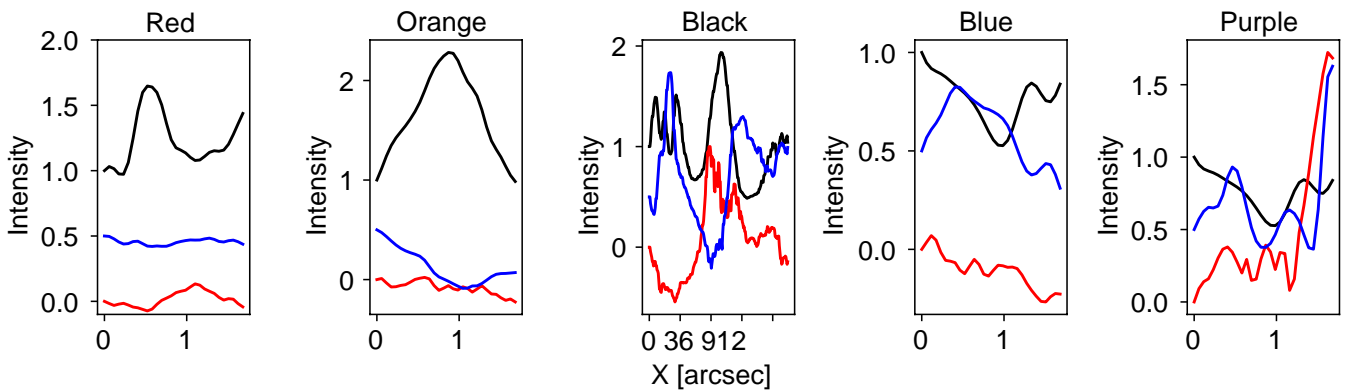


Fig. 5: the Ca II 8542 Å polarization degree derived from the Stokes profiles extracted from the pixels along the colored cross-sections shown in Figs. 1 and 2. The black line represents the red-wing intensity along each slit, the blue line represents the TCP, and the red line denotes the TLP along the same cut. Each line profile is normalized and offsets for ease of comparison.

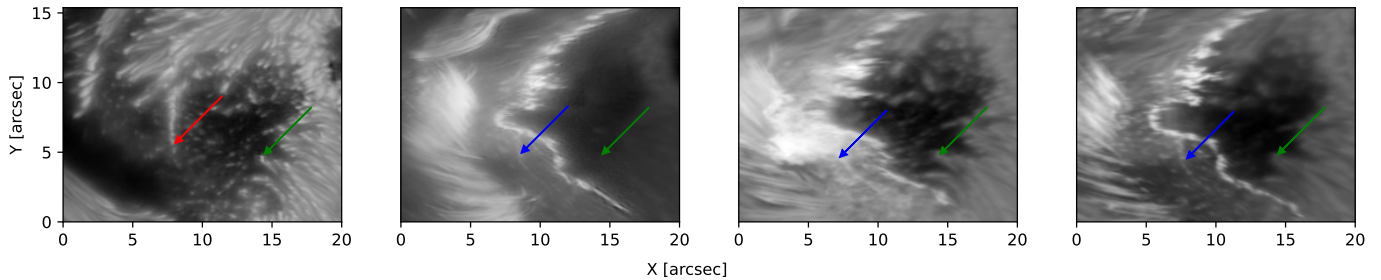


Fig. 6: A photospheric map at 11:57 UT, plotted with respect to  $(x,y)=529,-278$  taken in the  $4000 \text{ \AA}$  continuum (left panel), along with co-aligned, logarithmically scaled maps of the red wing of Ca II K, H $\alpha$ , and Ca II 8542  $\text{\AA}$ , respectively. A chain of peripheral umbral dots is indicated with the red arrow, while its imprints on the ribbon are indicated with the blue arrows. Green arrows indicate the location of a penumbral feature used to align all images. The offset between the red and blue arrows gives an indication of the height difference between each layer.

layer (de la Cruz Rodríguez et al. 2019, Fig. 1). While it is suggested from modeling (Allred et al. 2005, 2015; Kowalski et al. 2017a; Simões et al. 2017; Druett et al. 2017; Druett & Zharkova 2018, 2019; Druett et al. 2023a) and from the mean heights of flare ribbon emission observed over the solar limb (Kuridze et al. 2020) that the lower atmosphere of the flare is greatly compressed when compared to the quiet Sun, we still assume for the sake of this graphic that the relative ordering of the line core formation regions remains intact.

Five structures of interest are investigated in this work by extracting spectral profiles from the lines of pixels intersecting the feature locations (see Fig. 1). While most slits overlap for all spectral lines, we found that it was not possible to achieve this for the first type of region that is indicated in red. A different location was picked for the H $\alpha$  line to ensure that the selected profiles are representative.

1. Dense kernels that create a variegation pattern on the bright flare ribbon (indicated by red lines). We name these regions 'ribbon freckles' due to their spotty nature on the otherwise smooth flare ribbon. They can be seen as bright spots in the Ca II 8542  $\text{\AA}$  red wing, and as purple (H $\alpha$ ) or yellow (Ca II 8542  $\text{\AA}$ ) spots in the COCOPLOTS. These features are much less obvious in both the wing and COCOPLOT of Ca II K, but can be seen as a subtle brightening in the former.
2. The leading edge of the ribbon, which exhibits spectral profiles with larger red-shifts than the typical profiles on the main body of the ribbon (indicated with orange lines). Therefore, this feature appears as a bright edge in the red wing of all three lines, and with an orange-red color in the COCOPLOTS.
3. Areas with spectra that exhibit large red-shifted components in their profiles which occur near the footpoints of the flare loop arcade (profiles taken along the white line). In the COCOPLOT they can be seen as a color similar to that of the freckles, making it more difficult to distinguish between the two, close to the flare arcade.
4. A narrow lane of Doppler blue-shifted profiles found on either side of the flare arcade, close to the down-flows of region three (indicated with blue lines).
5. Wide profiles that occur in small bright flare kernels early on in the time series. These are indicated with magenta lines in Fig. 2, where they have a white color in the H $\alpha$ , and Ca II 8542  $\text{\AA}$  COCOPLOT, while appearing up as a bright

green color in Ca II K. In the continuum, they correspond to white light flare emission.

The spectra of the features shown with cross-section cuts in Figs 1 and 2 are displayed in Figs. 3 and 4, where each column corresponds to the aforementioned features and each row shows the Ca II K, H $\alpha$ , and Ca II 8542  $\text{\AA}$  spectra.

### 3.1. Ribbon freckles and flare ribbon height

The red lines in Fig. 1 correspond to ribbon freckles. The colored slits cross a freckle at roughly  $X=0.6-0.7$  arcsec, where there is some broadening in each of the three lines. To illustrate this, the individual spectra of the 15 pixels before the core of the freckle have been plotted in the first column of Fig. 4, where the darkest profile represents the center of a freckle, and the lightest profile represents the background area slightly away from it. From this, it can be seen that in both calcium lines the freckle is characterized by a broadening in the red wing, while in H $\alpha$  it broadens on both sides, as well as flattens off in the core. Visually there is no clear shift in the central position of the H $\alpha$  line. However, when comparing the line profile centroids a close agreement is found for the Doppler shift in each of the three lines, with Ca II K, H $\alpha$ , and Ca II 8542  $\text{\AA}$  showing maximum displacements of  $1.55 \text{ km s}^{-1}$ ,  $1.69 \text{ km s}^{-1}$ , and  $1.70 \text{ km s}^{-1}$  respectively with respect to the centroid positions outside the freckle. The line centroids were calculated using equal weightings for each measurement. Each measurement is the average of the locations of the left and right sides of the line profile at intensities equal to (0.5, 0.6, 0.7, 0.8, and 0.9) of the maximum value. These fractions are measured in terms of the increase above the baseline intensity, which was taken in far the blue wing. These threshold values were chosen so that the profile locations we used all fall inside the available spectral window, and linear interpolation of the profile values was used to estimate the locations of the intersections of the line profiles with the threshold values between sampled wavelengths.

From the polarimetric signal, which is plotted from profiles taken along the slits in Fig. 5 and the maps in Fig. 1, it can be seen that these structures tend to have an overall lower signal in both the linear and circular polarization maps relative to their surroundings. When compared to the  $4000 \text{ \AA}$  continuum, some but not all freckle structures can be seen to correspond to the locations above visible umbral dots and penumbra structures. This

is illustrated in Fig. 6, where the imprint of a narrow chain of peripheral umbral dots can be seen on the flare ribbon in all three lines.

The flare ribbon height can be estimated based on the location of ribbon freckles if it is assumed that the freckle is oriented vertically and that the ribbon lies parallel to the solar surface. This is done by equating the viewing angle to the hypotenuse of the shift in the FOV  $\Delta r$ , and the height between the two objects  $\Delta z$ , with a consistency check performed to ensure that the quotient of these changes is approximately in agreement with what would be expected for a vertical structure at this viewing angle  $\theta$ . Solving this right-angled triangle gives  $\Delta z = \Delta r / \sqrt{1 - \cos^2 \theta}$ .

For Ca II K a precise shift of  $0.75''$  can be estimated with respect to the corresponding photospheric feature, as both the line and its continuum are observed in the same scan. For the other two lines this is more difficult due to the absence of a continuum point to align with, as well as the differing pixel size and sub-optimal seeing conditions between them and the  $4000 \text{ \AA}$  continuum point. Instead, the peak intensity of a familiar photospheric point (Fig. 6, green arrow) is selected in the line wing of all three lines, and the distance between that and the imprint of the chain of peripheral umbral dots is calculated. The three measured horizontal shifts for Ca II K, H $\alpha$ , and Ca II 8542  $\text{\AA}$  are 90, 91, and 93 CRISP pixels respectively, which correspond to heights of 710, 690, and 600 km above the photospheric reference point.

In Ca II K the feature marked by the green arrow moves by roughly  $0.2''$  (5 CRISP pixels), when observed from the continuum point versus the line wing due to the change in formation height of the continuum and the spectral line. Conservatively, a similar shift is assumed in the remaining two, lower-forming, lines, which is combined with the uncertainty of finding the exact location of the penumbral feature. We use this value, which corresponds to roughly 150 km, as an uncertainty in the measures. For the Ca II K line a smaller uncertainty of 3 CHROMIS pixels is assumed, which corresponds to roughly 100 km.

### 3.2. Leading edges

The orange line in Fig. 1 corresponds to a representative location for the leading edges of the flare ribbon, with the corresponding spectra being shown in the second column of Figs. 3 and 4. In all three lines, a strong enhancement is seen in the red wing that is not observed in the blue wing or central part of the profile, suggesting additional components to the emission spectrum. The separation of these components is particularly visible in the Ca II 8542  $\text{\AA}$  line (Fig. 3 central column, bottom pair of panels) and also somewhat in the Ca II K line (Fig. 3 central column, bottom pair of panels). In polarization, we see a strong dip in total circular polarization in this area, while the total linear polarization does not change as drastically.

### 3.3. Down-flows

The white cross-section in Fig. 1 is aligned with the post-flare loop arcade, which has footpoints overlapping the trailing edges of the flare ribbons. It is longer than the other cuts to capture the full behavior along the condensed material in the loops. The cut starts on the right side, which is represented with light grey profiles in the third column of Figs. 3 and 4. Both representations show profiles with central enhancement along the full length of the slit, with a component that shows a strong red-shift towards the end of the cross-section at the base of the loop footpoint. The red-shift of this enhanced emission component increases

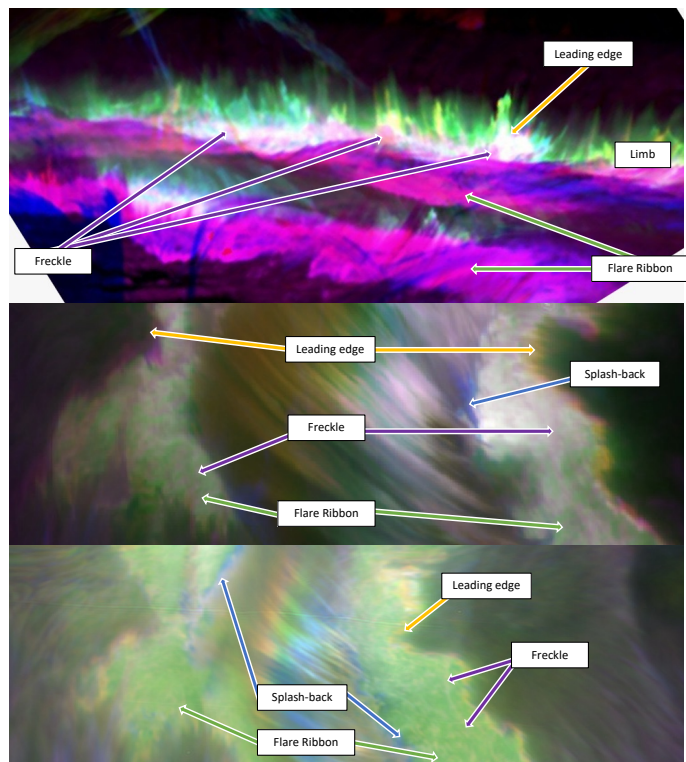


Fig. 7: A comparison between COCOPLOTS of two X-class flares in edge-on, and top-down views with the described region types pointed out from a top-down and sideways view. **Top:** A two-ribbon X1.5-class flare seen in H $\alpha$  at the solar limb in the NOAA Active Region NOAA 12087 observed with CRISP at the SST on June 10 2014 at 12:52 UT. The data for this flare is comprehensively described in Singh et al. (2024). **Middle:** H $\alpha$  observations of our X9.3-class flare. **Bottom:** Ca II 8542  $\text{\AA}$  observations of our X9.3-class flare

until the signal exits the observational spectral window in both the Ca II 8542  $\text{\AA}$  and H $\alpha$  lines, but stops at around  $70 \text{ km s}^{-1}$  in Ca II K. In polarization, it is found that the signal is primarily linearly polarized in the first part of the cross-section, near the coronal loop-tops of the arcade. The signal switches to being primarily circularly polarized as we move along the slit towards the footpoint of the loop and the trailing edge of the flare ribbon, as one would expect for a signal from material following a magnetic field loop through the corona viewed at this orientation.

### 3.4. Confined up-flows

The blue line in Fig. 1 crosses the narrow lane showing blue-shifted emission profiles in Ca II 8542  $\text{\AA}$  that is located close to the footpoints of the coronal rain down-flows. The measured blue shift is of a similar order as the freckle red-shift, and is stronger in Ca II 8542  $\text{\AA}$  than Ca II K. In H $\alpha$  it is not measured, and only a red-shift is visible. The polarimetric signal stays mostly the same when compared to its surroundings.

### 3.5. Broad profiles

The magenta cuts in Fig. 2 cross bright kernels close to the flare ribbon edge that are white in both the COCOPLOT images of Ca II 8542  $\text{\AA}$ , and H $\alpha$ , and a bright green in Ca II K. The profiles



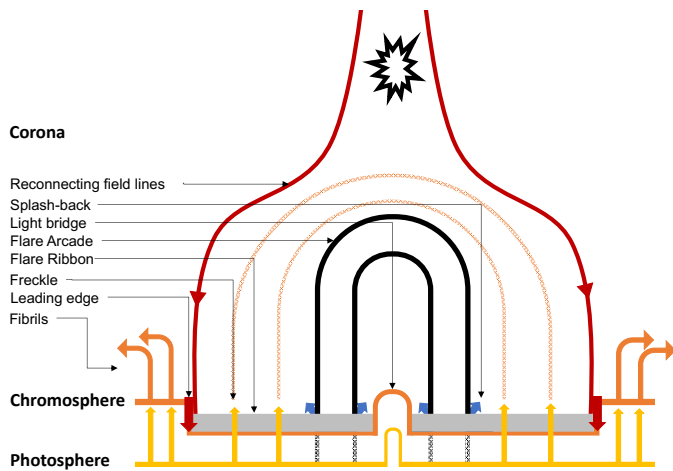


Fig. 8: Schematic representation of a cross-section through a two-ribbon flare, with the features described in this work.

taken from these areas are shown in Figs. 3 and 4, which corroborate that this coloration is due to a strong line profile broadening in these locations.

## 4. Interpretation, discussion, and conclusions

The high spatial and spectral resolutions of these observations allow for a detailed study of flare ribbon substructures at various heights in the chromosphere through a set of three spectral lines. This on-disc view is also contrasted with an on-limb X1.5-class flare observation from (Singh et al. 2024), which can be used for further validation of our suggested model for their origins. These two points of view, together with characteristic examples of each of the five features described in this paper are shown in Fig. 7. Additionally, a schematic cross-section of a two-ribbon flare presenting our findings regarding these substructures is shown in Fig. 8. In this section we break-down the discussion of these features, separating each into its own subsection, starting with the five types described in the results section 3, and ending with a discussion on the height of the flare ribbon emission.

### 4.1. Ribbon freckles

An example of these ribbon sub-structures is marked in red in Fig. 1, with profiles displayed in the first column of Figs. 3, 4, and 5. In the schematic of Fig. 8 they are represented by the tops of the yellow bunched field on the flare ribbon, which matches the elevated purple structures seen in the on-limb observation of Fig. 7. In  $H\alpha$  the most noticeable characteristics are the flattening (saturation) and broadening of the line core. This can be interpreted as an increased opacity due to the higher density of material in this region, which in turn results in a saturation of the profile against the source function (See Pietrow et al. 2022, Fig. 7). Additionally, a small centroid red-shift of  $1.69 \text{ km s}^{-1}$  was also measured. Some of these regions align with umbral and penumbral structures found in the photosphere. In both the  $\text{Ca II } 8542 \text{ \AA}$  and  $\text{Ca II } K$  lines the line core intensity increases slightly and in all three spectral lines the line broadens on the red side of the profile, suggesting the presence of low-velocity down-flow components, or velocity gradients in these regions. Maximum displacements of  $1.55 \text{ km s}^{-1}$ ,  $1.69 \text{ km s}^{-1}$ , and  $1.70 \text{ km s}^{-1}$  were found for the  $\text{Ca II } 8542 \text{ \AA}$ ,  $H\alpha$ , and  $\text{Ca II } K$  lines respectively with respect to the centroid positions outside

the freckle. This coupled with the decrease of both the linear and circular polarisation inside the freckle as compared with the rest of the slit, as seen in Fig. 5, implies that the plasma in these regions is less magnetized than its surroundings. We propose that these features occur above concentrations of flux on the ribbons, into which a greater density of material is collected during the ribbon formation, compared to the surroundings. This is consistent with the  $H\alpha$  line opacity, which is strongly correlated with column mass (Leenaarts et al. 2012), meaning that such a flux tube would raise the opacity locally, and in turn broaden and saturate the line core via opacity broadening. A larger opacity contribution from the upper regions of the flare ribbon can also explain the lower polarization signal despite the flux concentration below. This is because the formation region is sampled higher in the atmosphere, and the emission is thus forming at heights with a lower magnetic field strength. This is also consistent with features we have observed in the limb flare data set presented by Singh et al. (2024), where it is possible to see ribbon freckles from the side. On the solar limb, they are visible as small "puffs" and "loops" of higher-density chromospheric material extending above the main flare ribbon structure.

### 4.2. Leading edges

The leading edges, marked by orange lines in Fig. 1, exhibit increased emission along with a strong Doppler red-shifted component compared to the rest of the ribbon. Additionally, the circular polarization signal decreases strongly, like the freckles (see 2nd column of Figs. 3, 4, and 5). They are represented as red downwards-pointing arrows in Fig. 8.

In Singh et al. (2024) it was found that the flare ribbon exhibits rapid brightenings of higher-lying chromospheric material that subsequently decreases in height with velocities on the order of tens of  $\text{km s}^{-1}$ . In particular, the authors consider that this apparent velocity could be due to plasma motions, or thermal conduction including heating or cooling. Our top-down observations provide leading-edge features with Doppler-shifted velocities of the same order as Singh et al. (2024) registered for plane-of-sky plasma motion velocities, typically several tens of  $\text{km s}^{-1}$ . This interpretation of higher formation height is again consistent with the observed lower polarimetric signal. Thus in our schematic, these are interpreted as features at the leading edges of the flare ribbons. In particular, the compression of the non-flaring chromospheric density plasma and pre-existing chromospheric structures at the leading edges, displayed using red arrows near the flare ribbon in Fig. 7. These have traditionally also been interpreted as sites of energetic particle beams, although more recently other potential effects at the leading edge have been presented (Polito et al. 2023; Druett et al. 2023b,a). Moreover, the side-on view provided by the limb flare in the top panel of Fig. 7 is consistent with the impression of greater formation heights that one can also gain from the on-disc view. Namely, that the chromospheric structures outside of the flare ribbon area form at greater vertical heights in the atmosphere. This can be seen via the broad flare ribbon emission which appears white in the COCOPLLOT. However, the core wavelengths of this emission are absorbed by the cooler material in front of it in the line of sight, which due to the viewing angle, must relate to plasma at higher vertical locations. This absorption removes the signal from the COCOPLLOT central (green) filter, leaving areas with overlapping cool material in the line of sight as bright magenta in the image, whereas the unobstructed areas of the flare ribbon are bright white.



### 4.3. Coronal rain down-flow regions

Close to the footpoints of the flare arcade there are chromospheric spectral profiles that indicate the presence of strongly red-shifted components of the emission. The maximum measurable Doppler velocities within the spectral windows are around  $70 \text{ km s}^{-1}$  and contributions from the emission in  $H\alpha$  and  $\text{Ca II } 8542 \text{ \AA}$  appear to be present outside the limits of their respective wavelength windows. These are marked by the white line in Fig. 1, and their spectra are shown in the third column of 3, and 4.

These features are evidenced by our high-resolution observations as coronal rain down-flows from the now-cooling and condensing material that had previously been evaporated into the reconnected flare loops. They are represented as the footpoints of the black loops near the trailing edge of the flare ribbon in the schematic Fig. 8.

Typical values for chromospheric down-flows observed with modern instruments are between  $40$  and  $100 \text{ km s}^{-1}$  (Druett et al. 2017; De Pontieu et al. 2021; Kerr 2022), often with lifetimes on the order of tens of seconds to a minute. However, older  $H\alpha$  observations with wider spectral windows showed flare ribbon spectra close to the polarity inversion line with Doppler shifted components between  $100$  and  $200 \text{ km s}^{-1}$  lasting for times on the order of a few minutes (Ichimoto & Kurokawa 1984; Zarro et al. 1988; Wuelser & Marti 1989; Zarro & Canfield 1989).

The older results can now potentially be re-interpreted as regions at the footpoints of coronal rain loops that are overlapping with the flare ribbon in the line of sight. Spectra from our study in these regions show emission enhancement components that move out of the spectral window as one moves along the flare loop, towards the foot points of the arcade. This implies that down-flow velocities above  $100 \text{ km s}^{-1}$  are plausible in these regions. Moreover, the prolonged supply of coronal rain mass over a few minutes could also explain the long duration of the red-shifted components that were previously observed, without the recourse to an exceptionally deep ingress of the down-flowing material into the Sun.

In UV lines, velocities above  $100 \text{ km s}^{-1}$  have recently been reported in IRIS observations by Xu et al. (2023) for a short-lived region of interest inside of an X1.3 flare. In their paper, these down-flow velocities are also interpreted as decelerating coronal down-flows.

### 4.4. Down-flow splash-back

The narrow channel of areas showing blue-shifted emission at the bases of coronal rain down-flows were investigated using profiles along the cuts indicated by blue lines in Fig. 1. These profiles exhibit a low-velocity blue-shift in the calcium lines, while no conclusive shifts are seen in  $H\alpha$  (see 4th column of Figs. 3, 4, and 5). They are represented as blue upwards pointing arrows in Fig. 8. The small area in which these up-flows occur, and their proximity to the coronal rain down-flows suggests that this is not the same type of up-flow that was described by Schmieder et al. (1990) and interpreted as a gentle evaporation, as this was visible from a transition-region line, while this feature can barely be detected in the lowest forming chromospheric line.

Instead, we propose that the proximity of these regions to the red-shifted profiles caused by coronal rain, as well as the parabolic spatial variation of the blue-shifted  $\text{Ca II } 8542 \text{ \AA}$  feature, suggest that these may be a form of reflection, or 'splash-back' from the impact of the coronal rain against the flare ribbon.

The fact that the polarization signal is comparable to the surrounding area, also suggests that this material does not travel as high as the freckles. Due to the sideways projection, and except where the line-of-sight is favorable, it is not always easy to distinguish these features from the leading edge of the limb flare ribbons in Fig. 7.

This phenomenon could potentially be modeled using the latest multi-dimensional flare simulations (Ruan et al. 2020; Druett et al. 2023b,a).

### 4.5. Broad profiles

Highly broadened spectral lines are common in chromospheric lines, particularly in  $H\alpha$ , but partly due to their intractable nature, they have not been commonly studied (Druett et al. 2021; Kowalski et al. 2022). Example plots from the same data set were provided in Figure 14 of Zharkov et al. (2020) for  $H\alpha$ , and additional examples for  $\text{Ca II } 8542 \text{ \AA}$  are reproduced here.

The "appearance" of line profile broadening can arise for a number of reasons. They can be created by multi-velocity plasma in the line of sight such as Doppler shifted emission from coronal rain or prominence material located over centrally enhanced emission from below (see broad profiles in column 3 of Fig. 4), or spatially unresolved flows within an observational "pixel". These should however, be carefully distinguished from flattened profiles without broadening, which can also be produced in lines that are typically absorption lines, but that are nearing conversion into emission (e.g. Berlicki et al. 2005, Fig. 5.). Also, opacity broadening can produce great variations in line profile widths without recourse to highly increased temperatures to explain the variations that would be required using thermal broadening (Molnar et al. 2019; Pietrow et al. 2022).

However, many examples do appear to be highly "broadened" in the true sense of the word, particularly in the impulsive phases of solar flares. Typically broadening mechanisms considered in spectral lines include Lorentzian (such as natural broadening) and Gaussian effects (such as thermal motions) (see section 3.3 of Rutten 2003, for a more comprehensive discussion of these broadening effects). However, the typically considered line-broadening processes are far from able to explain the full widths of such profiles, which often also defy capture in Fabry-Perot interferometer spectral windows.

No comprehensive explanation of these line widths currently exists. Attempts have been made to see if they are consistent with generation through mechanisms such as the Orrall Zirker Effect (Orrall & Zirker 1976) i.e. the exchange of an electron with a proton in a beam of energetic ions accelerated as well as the electrons in the corona (Kerr et al. 2023a). Another important factor is the modeling of broadening due to the quadratic Stark effect, due to the presence of high densities of free electrons in the flare ribbon (Zharkova & Kobylinskii 1993; Allred & Kowalski 2016; Kowalski et al. 2017b; Druett & Zharkova 2018). Investigations are continuing to try to address this issue (Kowalski et al. 2022; Kerr et al. 2023b). Here we also mention a speculative thermal, but particle process that might be considered as a candidate to help explain these excessive line widths. The proposed mechanism is a "companion" of the Orrall Zirker effect, namely a "memory effect" of high-temperature protons, and other ions. The tops of flare chromospheres have a compact interface between chromospheric temperature material and extraordinarily dense and high temperature thermal coronal material that is often highly turbulent

Although electrons at coronal temperatures tend not to recombine with hydrogen ions (protons) due to their great microscopic energies and the slow recombination rates (Leenaarts et al. 2007), high-temperature thermal coronal protons intruding to cooler layers could come into contact with electrons thermalized to chromospheric temperatures that have similar microscopic velocities, due to the 1836 mass ratio between the proton and electron particle species. It is feasible that these populations could recombine. If recombination occurs between these two populations then exceptionally broadened emission would be produced, with memory-effect "thermal" Doppler widths in great excess of the local electron temperature. However, this effect is yet to be tested or proven with modeling and experimentation.

#### 4.6. Flare ribbon height

The height of the flare ribbon can be estimated for all three lines based on the locations of ribbon freckles and the corresponding structures below (see Fig. 6.) However, as the photospheric features seen in the line wing of these lines do not form at the same location, an uncertainty of around 150 km (See end of Sec. 3.1) is introduced to height measured in this way. This is not the case for the Ca II K line, as it is co-aligned with a continuum point which allows for a direct comparison between the two, resulting in a lower uncertainty of roughly 100 km. Heights of 710, 690, and 600 km have been measured for Ca II K, H $\alpha$ , and Ca II 8542 Å respectively with respect to the umbral feature marked in Fig. 6. This is consistent with the fact that the freckles used to measure these heights have very similar centroid red-shifts, which means that they either have a consistent velocity structure over height, or are sampled at similar heights.

While the error bars make it impossible to confirm whether or not the lines indeed form in the expected order, it is apparent that the chromosphere is indeed compressed down greatly when compared to a non-flaring atmosphere (e.g. Vernazza et al. 1976; de la Cruz Rodríguez et al. 2019; Morosin et al. 2020). It is also in line with the 170km wide flare layer width described by Berlicki et al. (2008), although our flare ribbons appear to form much lower than is suggested in that work.

This is higher than the 300-500 km H $\beta$ , and 0 km Ca II 8542 Å ribbon heights inferred by (Kuridze et al. 2020), and from x-ray signatures (200-300 km Martínez Oliveros et al. 2012), but slightly below the value of 800 km above the photosphere inferred by Krucker et al. (2015) from x-ray emission. However, it should be noted that our height estimate is with respect to features inside of a sunspot which are effected by Wilson depression (Wilson 1774). This is around 600 km on average for the umbra (Löptien et al. 2018), but is expected to be less for umbral dots (e.g. Wilson 1969). This adds further uncertainty to the absolute height of the flare ribbon with respect to the solar surface. This could potentially be constrained by inverting the region with a code that allows for the recovery of a geometrical scale, such as FIRTEZ-dz (Pastor Yabar et al. 2019).

1D simulations have produced similar emission heights for hydrogen emission in down-flowing chromospheric compression, for example, the 5F11 RADYN flare reported in Kowalski et al. (2022) and the HYDRO2GEN simulations of Druett & Zharkova (2018). Recent multi-dimensional simulations of Druett et al. (2023a) also show plasma with characteristic temperatures for emission in these lines bunched around heights of 500-1000 km in their most powerful flare simulations.

#### 4.7. Outlook

Flare ribbons are highly complicated, and dynamic phenomena with many rapidly evolving sub-structures that require observations at high spatial and temporal resolution to be captured. The strong variation in the presented spectral features of these sub-structures shows that care should be taken when lower-resolution or average spectra are produced.

This study provides prospective and illustrative, but not definitive interpretations of the variety of flare ribbon profiles. This work will be followed up by statistical, inversion-based, and simulated investigations to bolster the evidence provided here from imaging and qualitative spectral analysis.

*Acknowledgements.* We thank the anonymous referee for their valuable suggestions during the peer-review process. M.D. is supported by FWO project G0B4521N and also received funding from the European Research Council (ERC) under the European Union Horizon 2020 research and innovation program (grant agreement No. 833251 PROMINENT ERC-ADG 2018). The Swedish 1-meter Solar Telescope is operated on the island of La Palma by the Institute for Solar Physics of Stockholm University in the Spanish Observatorio del Roque de los Muchachos of the Instituto de Astrofísica de Canarias. The Institute for Solar Physics was supported by a grant for research infrastructures of national importance from the Swedish Research Council (registration number 2017-00625). This research has made use of NASA's Astrophysics Data System (ADS) bibliographic services. We acknowledge the community efforts devoted to the development of the following open-source packages that were used in this work: numpy (numpy.org), matplotlib (matplotlib.org), and astropy (astropy.org). We extensively used the CRISPEX analysis tool (Vissers & Rouppe van der Voort 2012), the ISPy (Díaz Baso et al. 2021) and CRISPy (Pietrow 2019) libraries, and SOAImage DS9 (Joye & Mandel 2003) for data visualization.

#### References

- Allred, J. C., Hawley, S. L., Abbett, W. P., & Carlsson, M. 2005, *ApJ*, 630, 573  
 Allred, J. C. & Kowalski, A. F. 2016, in AGU Fall Meeting Abstracts, SH43E-04  
 Allred, J. C., Kowalski, A. F., & Carlsson, M. 2015, *ApJ*, 809, 104  
 Asai, A., Ichimoto, K., Kita, R., Kurokawa, H., & Shibata, K. 2012, *PASJ*, 64, 20  
 Baker, D. M. 1970, in Observation and Prediction of Solar Activity, Am. Inst. Aeronaut. Astronaut. Conf., 1370  
 Berlicki, A., Heinzel, P., Schmieder, B., & Li, H. 2008, *A&A*, 490, 315  
 Berlicki, A., Heinzel, P., Schmieder, B., Mein, P., & Mein, N. 2005, *A&A*, 430, 679  
 Brown, J. C. 1971, *Sol. Phys.*, 18, 489  
 de la Cruz Rodríguez, J., Leenaarts, J., Danilovic, S., & Uitenbroek, H. 2019, *A&A*, 623, 623  
 de la Cruz Rodríguez, J., Löfdahl, M. G., Sütterlin, P., Hillberg, T., & Rouppe van der Voort, L. 2015, *A&A*, 573, A40  
 De Pontieu, B., Polito, V., Hansteen, V., et al. 2021, *Sol. Phys.*, 296, 84  
 De Pontieu, B., Title, A. M., Lemen, J. R., et al. 2014, *Sol. Phys.*, 289, 2733  
 Deng, N., Tritschler, A., Jing, J., et al. 2013, *ApJ*, 769, 112  
 Díaz Baso, C., Vissers, G., Calvo, F., et al. 2021, in Zenodo software package, Vol. 56, 5608441  
 Dodson, H. W., Hedeman, E. R., & McMath, R. R. 1956, *ApJS*, 2, 241  
 Druett, M., Ruan, W., & Keppens, R. 2023a, *arXiv e-prints*, arXiv:2310.09939  
 Druett, M., Scullion, E., Zharkova, V., et al. 2017, *Nature Communications*, 8, 15905  
 Druett, M. K., Kontogiannis, I., Pietrow, A. G. M., et al. 2024, *arXiv e-prints*  
 Druett, M. K., Pietrow, A. G. M., & Vissers, G. J. M. 2021, in SOLFER Spring 2021 Meeting, E1  
 Druett, M. K., Pietrow, A. G. M., Vissers, G. J. M., Robustini, C., & Calvo, F. 2022, *RASTI*, 1, 29  
 Druett, M. K., Ruan, W., & Keppens, R. 2023b, *arXiv e-prints*, arXiv:2310.11226  
 Druett, M. K. & Zharkova, V. V. 2018, *A&A*, 610, A68  
 Druett, M. K. & Zharkova, V. V. 2019, *A&A*, 623, A20  
 Emslie, A. G. 1978, *ApJ*, 224, 241  
 Fletcher, L., Dennis, B. R., Hudson, H. S., et al. 2011, *Space Sci. Rev.*, 159, 19  
 Harvey, K. L. 1971, *Sol. Phys.*, 16, 423  
 Huang, N., Xu, Y., Sadykov, V. M., Jing, J., & Wang, H. 2019, *ApJ*, 878, L15  
 Ichimoto, K. & Kurokawa, H. 1984, *Sol. Phys.*, 93, 105  
 Joye, W. A. & Mandel, E. 2003, in ASP Conf. Ser., Vol. 295, Astronomical Data Analysis Software and Systems XII, ed. H. E. Payne, R. I. Jedrzejewski, & R. N. Hook, 489

- Keppens, R., Popescu Braileanu, B., Zhou, Y., et al. 2023, *A&A*, **673**, A66
- Kerr, G. S. 2022, *Frontiers in Astronomy and Space Sciences*, **9**, 1060856
- Kerr, G. S., Allred, J. C., & Carlsson, M. 2019a, *ApJ*, **883**, 57
- Kerr, G. S., Allred, J. C., Kowalski, A. F., et al. 2023a, *ApJ*, **945**, 118
- Kerr, G. S., Allred, J. C., & Polito, V. 2020, *ApJ*, **900**, 18
- Kerr, G. S., Carlsson, M., & Allred, J. C. 2019b, *ApJ*, **885**, 119
- Kerr, G. S., Carlsson, M., Allred, J. C., Young, P. R., & Daw, A. N. 2019c, *ApJ*, **871**, 23
- Kerr, G. S., Kowalski, A. F., Allred, J. C., Daw, A. N., & Kane, M. R. 2023b, *arXiv e-prints*, [arXiv:2310.07111](https://arxiv.org/abs/2310.07111)
- Kerr, G. S., Xu, Y., Allred, J. C., et al. 2021, *ApJ*, **912**, 153
- Kleint, L., Berkefeld, T., Esteves, M., et al. 2020, *A&A*, **641**, A27
- Kosugi, T., Matsuzaki, K., Sakao, T., et al. 2007, *Sol. Phys.*, **243**, 3
- Kowalski, A. F., Allred, J. C., Carlsson, M., et al. 2022, *ApJ*, **928**, 190
- Kowalski, A. F., Allred, J. C., Daw, A., Cauzzi, G., & Carlsson, M. 2017a, *ApJ*, **836**, 12
- Kowalski, A. F., Allred, J. C., Uitenbroek, H., et al. 2017b, *ApJ*, **837**, 125
- Kowalski, A. F., Butler, E., Daw, A. N., et al. 2019, *ApJ*, **878**, 135
- Krucker, S., Saint-Hilaire, P., Hudson, H. S., et al. 2015, *ApJ*, **802**, 19
- Kuridze, D., Mathioudakis, M., Heinzel, P., et al. 2020, *ApJ*, **896**, 120
- Leenaarts, J., Carlsson, M., Hansteen, V., & Rutten, R. J. 2007, *A&A*, **473**, 625
- Leenaarts, J., Pereira, T., & Uitenbroek, H. 2012, *ASP Conf. Ser.*, **543**, A109
- Lemen, J. R., Title, A. M., Akin, D. J., et al. 2012, *Sol. Phys.*, **275**, 17
- Löfdahl, M. G. 2002, in *Proc SPIE*, Vol. 4792, *Image Reconstruction from Incomplete Data II*, ed. P. J. Bones, M. A. Fiddy, & R. P. Millane, **146–155**
- Löfdahl, M. G., Hillberg, T., de la Cruz Rodríguez, J., et al. 2021, *A&A*, **653**, 653
- Löptien, B., Lagg, A., van Noort, M., & Solanki, S. K. 2018, *A&A*, **619**, A42
- Machol, J. L., Eparvier, F. G., Viereck, R. A., et al. 2020, in *The GOES-R Series (Elsevier)*, **233–242**
- Maehara, H., Shibayama, T., Notsu, Y., et al. 2015, *Earth, Planets and Space*, **67**, 59
- Martínez Oliveros, J.-C., Hudson, H. S., Hurford, G. J., et al. 2012, *ApJ*, **753**, L26
- Molnar, M. E., Reardon, K. P., Chai, Y., et al. 2019, *ApJ*, **881**, 99
- Monson, A. J., Mathioudakis, M., Reid, A., Milligan, R., & Kuridze, D. 2021, *ApJ*, **915**, 16
- Morosin, R., de la Cruz Rodríguez, J., Vissers, G. J. M., & Yadav, R. 2020, *arXiv e-prints*, [arXiv:2006.14487](https://arxiv.org/abs/2006.14487)
- Orrall, F. Q. & Zirker, J. B. 1976, *ApJ*, **208**, 618
- Osborne, C. M. J. & Fletcher, L. 2022, *MNRAS*, **516**, 6066
- Otsu, T. & Asai, A. 2024, *arXiv e-prints*, [arXiv:2402.00589](https://arxiv.org/abs/2402.00589)
- Otsu, T., Asai, A., Ichimoto, K., Ishii, T. T., & Namekata, K. 2022, *ApJ*, **939**, 98
- Parker, E. N. 1963, *ApJS*, **8**, 177
- Pastor Yabar, A., Borrero, J. M., & Ruiz Cobo, B. 2019, *A&A*, **629**, A24
- Pesnell, W. D., Thompson, B. J., & Chamberlin, P. C. 2012, *Sol. Phys.*, **275**, 3
- Petschek, H. E. 1964, in *NASA Special Publication*, Vol. 50, **425**
- Pietras, M., Falewicz, R., Siarkowski, M., Bicz, K., & Preš, P. 2022, *ApJ*, **935**, 143
- Pietrow, A. G. M. 2019, *AlexPietrow/CRISpy 0.31*
- Pietrow, A. G. M. 2022, *Physical properties of chromospheric features: Plage, peacock jets, and calibrating it all*, PhD thesis, Stockholm University
- Pietrow, A. G. M., Cretignier, M., Druett, M. K., et al. 2024, *A&A*, **682**, A46
- Pietrow, A. G. M., Druett, M. K., de la Cruz Rodríguez, J., Calvo, F., & Kiselman, D. 2022, *A&A*, **659**, A58
- Polito, V., Kerr, G. S., Xu, Y., Sadykov, V. M., & Lorincik, J. 2023, *ApJ*, **944**, 104
- Quinn, S., Reid, A., Mathioudakis, M., et al. 2019, *ApJ*, **881**, 82
- Ruan, W., Xia, C., & Keppens, R. 2020, *ApJ*, **896**, 97
- Rutten, R. J. 2003, *Radiative Transfer in Stellar Atmospheres*
- Scharmer, G. 2017, in *SOLARNET IV: The Physics of the Sun from the Interior to the Outer Atmosphere*, **85**
- Scharmer, G. B., Bjelksjö, K., Korhonen, T. K., Lindberg, B., & Petterson, B. 2003, in *Proc. SPIE*, Vol. 4853, *Innovative Telescopes and Instrumentation for Solar Astrophysics*, ed. S. L. Keil & S. V. Avakyan, **341–350**
- Scharmer, G. B., Narayan, G., Hillberg, T., et al. 2008, *ApJ*, **689**, L69
- Scherrer, P. H., Schou, J., Bush, R. I., et al. 2012, *Sol. Phys.*, **275**, 207
- Schmidt, W., von der Lühe, O., Volkmer, R., et al. 2012, *Astronomische Nachrichten*, **333**, 796
- Schmieder, B., Malherbe, J. M., Simnett, G. M., Forbes, T. G., & Tandberg-Hanssen, E. 1990, *ApJ*, **356**, 720
- Schmit, T. J., Griffith, P., Gunshor, M. M., et al. 2017, *Bull. Am. Meteorol. Soc.*, **98**, 681
- Schmit, T. J., Gunshor, M. M., Menzel, W. P., et al. 2005, *Bull. Am. Meteorol. Soc.*, **86**, 1079
- Schmit, T. J., Li, J., Lee, S. J., et al. 2019, *Earth Space Science*, **6**, 1730
- Shibata, K. 1998, in *Astrophysics and Space Science Library*, Vol. 229, *Observational Plasma Astrophysics : Five Years of YOHKOH and Beyond*, ed. T. Watanabe & T. Kosugi, **187**
- Simões, P. J. A., Araújo, A., Valio, A., & Fletcher, L. 2024, *MNRAS* [[arXiv:2401.07824](https://arxiv.org/abs/2401.07824)]
- Simões, P. J. A., Kerr, G. S., Fletcher, L., et al. 2017, *A&A*, **605**, A125
- Singh, V., Scullion, E., Botha, G., et al. 2024, *ApJ* (Submitted)
- Stokes, G. G. 1851, *Transactions of the Cambridge Philosophical Society*, **9**, 399
- Sturrock, P. A. 1966, *Nature*, **211**, 695
- Sturrock, P. A. 1968, in *Structure and Development of Solar Active Regions*, ed. K. O. Kiepenheuer, Vol. 35, **471**
- Sweet, P. A. 1958a, in *Electromagnetic Phenomena in Cosmical Physics*, ed. B. Lehnert, Vol. 6, **123**
- Sweet, P. A. 1958b, *Il Nuovo Cimento*, **8**, 188
- Syrovatskii, S. I. & Shmeleva, O. P. 1972, *Soviet Ast.*, **16**, 273
- van Noort, M., Rouppe van der Voort, L., & Löfdahl, M. G. 2005, *Sol. Phys.*, **228**, 191
- Vernazza, J. E., Avrett, E. H., & Loeser, R. 1976, *ApJS*, **30**, 1
- Vissers, G. & Rouppe van der Voort, L. 2012, *ApJ*, **750**, 22
- Vissers, G. J. M., Danilovic, S., de la Cruz Rodríguez, J., et al. 2021, *A&A*, **645**, A1
- Švestka, Z., Kopecký, M., & Blaha, M. 1961, *Bulletin of the Astronomical Institutes of Czechoslovakia*, **12**, 229
- Švestka, Z., Kopecký, M., & Blaha, M. 1962, *Bulletin of the Astronomical Institutes of Czechoslovakia*, **13**, 37
- Wilson, A. 1774, *Philosophical Transactions of the Royal Society of London*
- Wilson, P. R. 1969, *Sol. Phys.*, **10**, 404
- Wuelser, J.-P. & Marti, H. 1989, *ApJ*, **341**, 1088
- Xu, Y., Kerr, G. S., Polito, V., et al. 2023, *arXiv e-prints*, [arXiv:2309.05745](https://arxiv.org/abs/2309.05745)
- Yadav, R., Díaz Baso, C. J., de la Cruz Rodríguez, J., Calvo, F., & Morosin, R. 2021, *A&A*, **649**, A106
- Zarro, D. M. & Canfield, R. C. 1989, *ApJ*, **338**, L33
- Zarro, D. M., Canfield, R. C., Strong, K. T., & Metcalf, T. R. 1988, *ApJ*, **324**, 582
- Zharkov, S., Matthews, S., Zharkova, V., et al. 2020, *A&A*, **639**, A78
- Zharkova, V. V., Arzner, K., Benz, A. O., et al. 2011, *Space Sci. Rev.*, **159**, 357
- Zharkova, V. V. & Kobylinskii, V. A. 1993, *Sol. Phys.*, **143**, 259
- Zhu, Y., Kowalski, A. F., Tian, H., et al. 2019, *ApJ*, **879**, 19